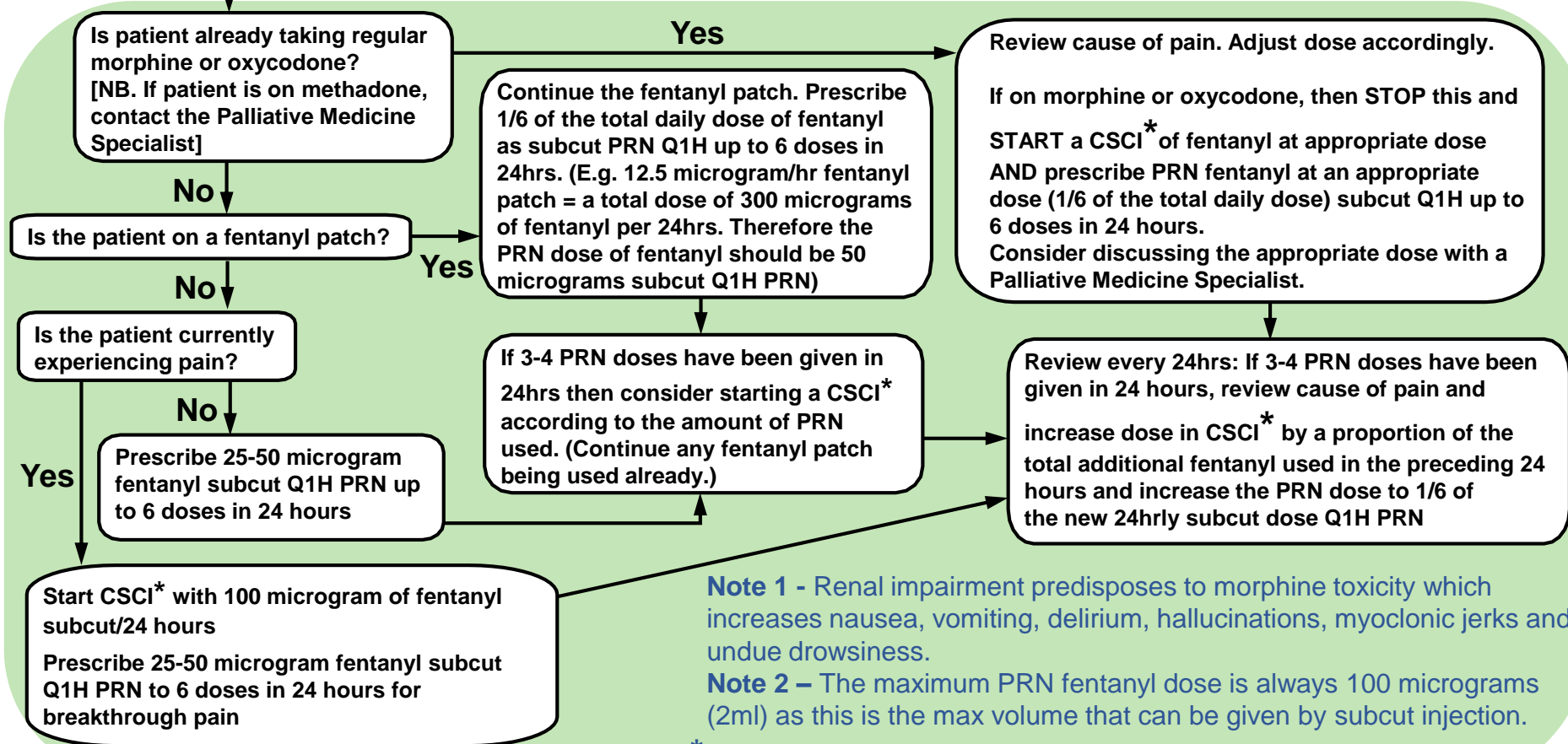


# PRESCRIBING GUIDANCE FOR SYMPTOM MANAGEMENT IN THE LAST HOURS OR DAYS OF LIFE

## PAIN AND RENAL IMPAIRMENT eGFR <30mL/minute

Review every 24 hours or earlier if 3-4 PRN doses in 24 hours



**Note 1** - Renal impairment predisposes to morphine toxicity which increases nausea, vomiting, delirium, hallucinations, myoclonic jerks and undue drowsiness.

**Note 2** – The maximum PRN fentanyl dose is always 100 micrograms (2ml) as this is the max volume that can be given by subcut injection.

**\*Note 3** - CSCI = continuous subcutaneous infusion

If symptoms persist or for further advice:

Hospital patients: Contact Hospital Palliative Care Team (Weekdays 9am-5pm) Hawke's Bay Soldier's Memorial Hospital.

At other times and for all other patients in the community: Contact Cranford Hospice community doctor (06) 878 7047.